



# BENTLEY IN BRIEF

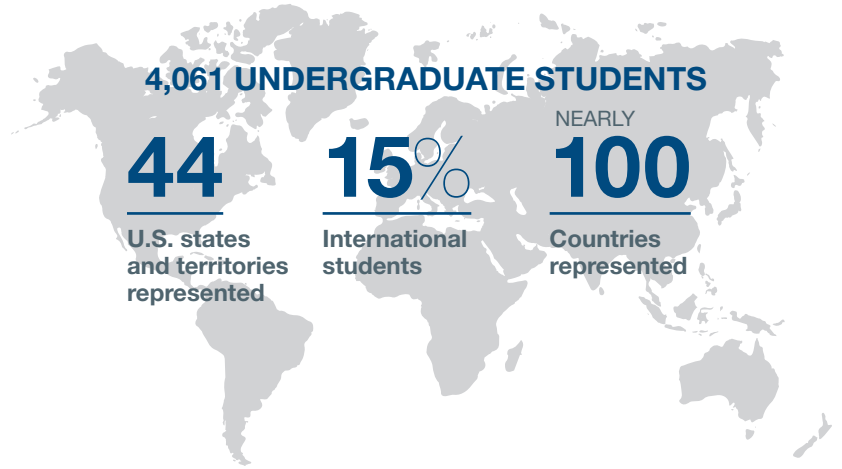


**BENTLEY UNIVERSITY**  
Waltham, MA  
163 acres (campus size)



**20 MINUTES TO**  
Boston  
Logan Airport

**3.5 HOURS TO**  
New York  
JFK Airport



## CLASS OF 2025 ADMITTED STUDENT PROFILE

**9,310** Applications

**37%**

● Students with **all A's** in core classes

**48%**

● Students with **A's & B's** in core classes

**15%**

● Other

## APPLICATION DEADLINES

### SEPTEMBER ADMISSION

**November 15**  
Early Decision (*binding*)

**January 15**  
Early Decision II (*binding*)

**January 15**  
Regular Decision (*non-binding*)

### JANUARY ADMISSION

**November 1**

## COST OF ATTENDANCE (2021-2022)

Tuition and Fees	\$54,910
Room and Board*	\$18,130
Books and Supplies*	\$1,325
Personal Expenditures*	\$1,250
Student Activity Fee	\$440
New Student Fee	\$250
<b>TOTAL</b>	<b>\$76,305</b>

*\*Denotes an estimate*

## STUDENT BODY

**97%**

First-year students live on campus



**3:2**  
male-to-female  
ratio

**26%**

Students of color (Domestic students)

## OUTCOMES

**98%**

Placement rate six months after graduation

**92%**

First-year retention rate

**92%**

Students complete one internship

**\$62,000**

Median starting salary of Bentley graduates



**90%**

Graduation rate

# ACADEMICS

**11:1**

Student-to-faculty ratio

**100%**

Classes taught by faculty

**291**

Full-time faculty

**172**

Part-time faculty

**80%**

Full-time faculty holding doctoral degrees

**26**

Average class size

# STUDY ABROAD

**51%**

Students study abroad

**25+**

countries offer study abroad programs

**80+**

Study abroad programs

# MAJORS

## BUSINESS MAJORS

Accountancy  
Business Economics  
Computer Information Systems\*  
Corporate Finance and Accounting  
Creative Industries  
Diversity, Equity and Inclusion  
Economics–Finance  
Finance  
Information Design and Corporate Communication  
Information Systems Audit and Control\*  
Management  
Marketing  
Professional Sales  
Quantitative Economics

## ARTS AND SCIENCES MAJORS

Actuarial Science\*  
Data Analytics\*  
Diversity, Equity and Inclusion  
English  
Health Studies  
History  
International Affairs  
Language, Culture and Business  
Liberal Arts  
Mathematical Sciences\*  
Media and Culture  
Philosophy  
Public Policy  
Sustainability Science

## OPTIONAL SECOND MAJORS

Business Studies  
Liberal Studies

\*Denotes STEM-Designated Program

# MINORS

Accountancy  
Actuarial Science  
Business Economics  
Business Risk Assurance  
Business Studies (BA students only)  
Computer Information Systems  
Data Technologies  
Earth, Environment and Global Sustainability  
English and Media Studies  
Entrepreneurial Studies  
Ethics and Compliance  
Finance  
Gender Studies  
Global Management  
Health and Industry  
History  
Human Resources Management  
Information and Process Management  
Information Design and Corporate Communication  
International Affairs  
International Economics  
Law  
Leadership  
Management  
Marketing  
Mathematical Sciences  
Modern Languages  
Nonprofit Organizations  
Philosophy  
Politics  
Psychology  
Public Policy  
Sociology  
Spanish for Business  
Sports Business Management  
Supply Chain/Operations Management  
Sustainable Investing

# STUDENT LIFE

**100+**

Student clubs and organizations

**40+**

Varsity, intramural and club sports

**1,500+**

Students participating in intramural and club sports

**20%**

Greek Life members

# ATHLETICS

## DIVISION I

Ice hockey (men's)

## DIVISION II

Baseball (men's)  
Basketball  
Cross country  
Field hockey (women's)  
Football (men's)  
Golf (men's)  
Indoor track and field  
Lacrosse  
Outdoor track and field  
Soccer  
Softball (women's)  
Swimming and diving  
Tennis  
Volleyball (women's)

This information may vary year to year.

**EMAIL** [ugadmission@bentley.edu](mailto:ugadmission@bentley.edu)

**WEB** [bentley.edu/undergraduate](http://bentley.edu/undergraduate)

**PHONE** +1 781-891-2244

**FAX** +1 781-891-3414

**f** Bentley University Undergraduate Admission

**@** [@bentleyadmission](https://www.instagram.com/bentleyadmission)